

VEVOR

Upgrade · The Home Creator Way

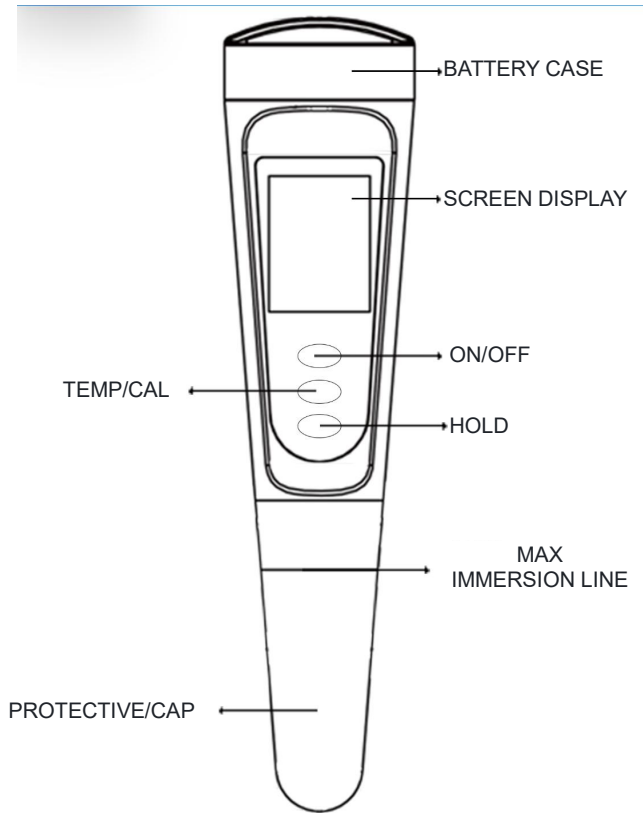
Water Quality Meter

MODEL: PH06

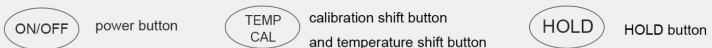
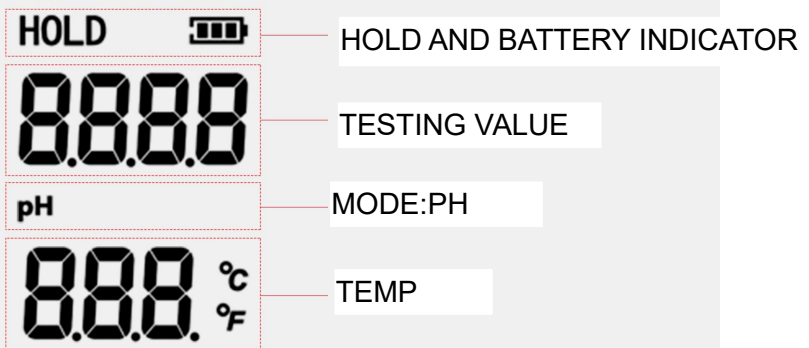
MODEL: PH06



This is the original instruction, please read all manual instructions carefully before operating. VEVOR reserves a clear interpretation of our user manual. The appearance of the product shall be subject to the product you received. Please forgive us that we won't inform you again if there are any technology or software updates on our product.



SCREEN DISPLAY



SPECIFICATION

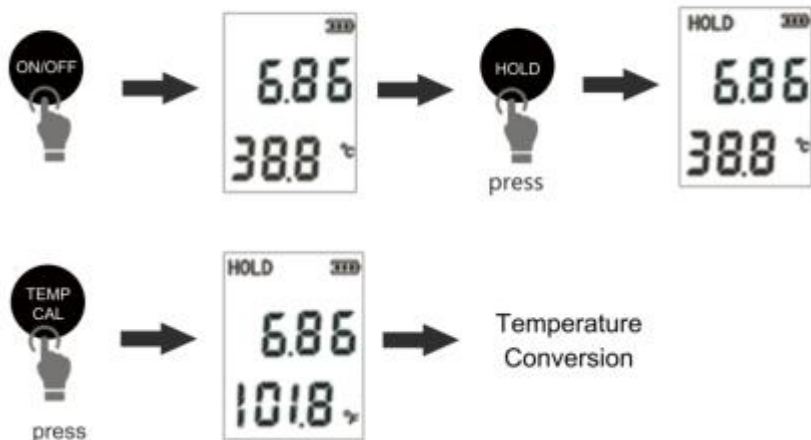
| | |
|--------------|------------------------------------|
| Parameters | PH06 |
| Range | 0.00~14.00 pH |
| Resolution | 0.01 pH |
| Accuracy | ±0.1 pH |
| Temp Range | 0.1-60 °C / 32-140 °F |
| ATC | 0.1-60 °C / 32-140 °F |
| Calibration | Three points automatic calibration |
| Power Supply | DC1.5V×4 (LR44) |

USING STEPS

1. Remove the protective cap.
2. Turn the meter on by pressing the "ON/OFF" key.
3. Immerse the meter electrode in the test solution (immersion depth can not be over the immersion line).
4. Stir gently and wait until the reading stabilized. (
5. If you need test temp, please long press "TEMP/CAL" button to get temp reading.
6. After finished, clean the electrode with distilled water, turn the meter off by pressing the "ON/OFF" key.
7. Replace the protective cap after use.

OPERATION

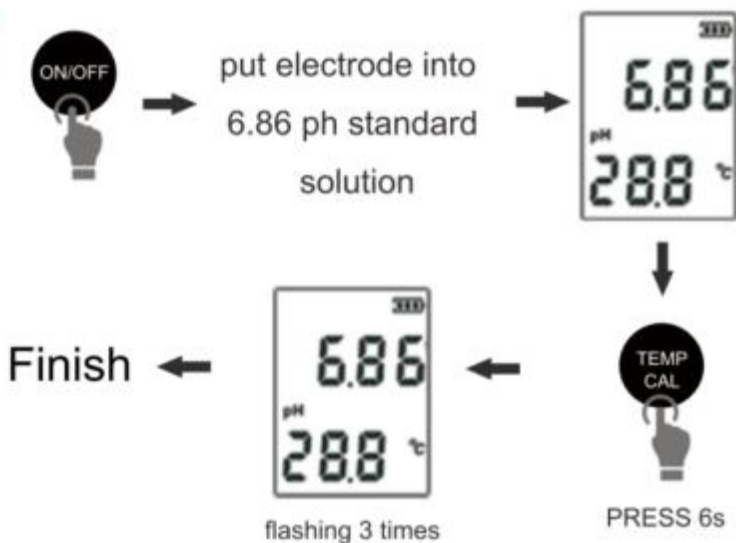
HOLD/TEMP.SHIFT



PH CALIBRATION

First, perform 6.86 pH calibration

6.86



4.00



put electrode into
4.00 ph standard
solution



PRESS 6s



flashing 3 times

Finish

9.18



put electrode into
9.18 ph standard
solution



PRESS 6s

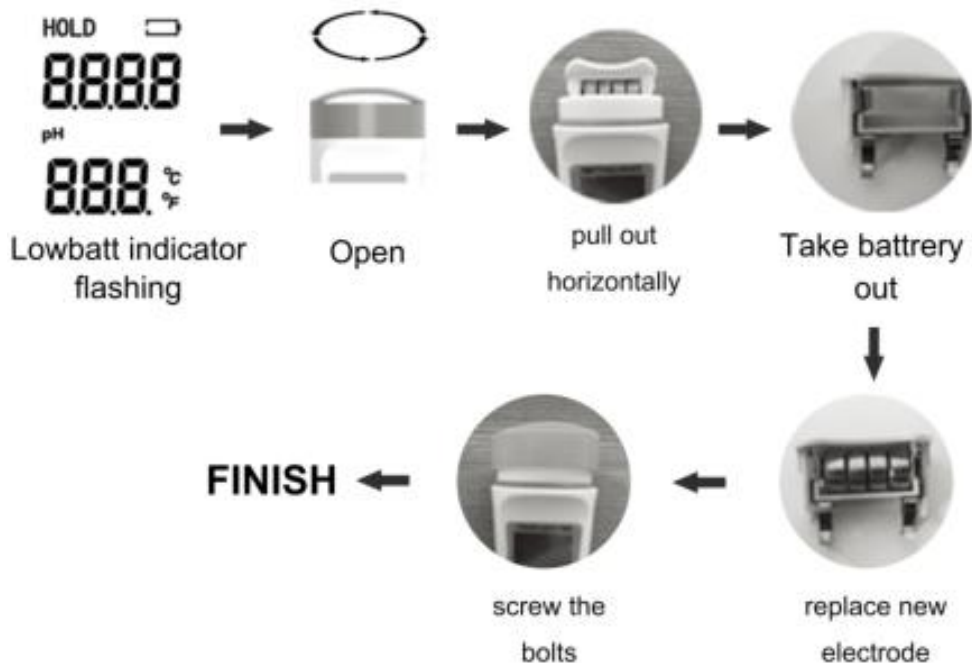


flashing 3 times

Finish



LOW BATTERY



When the display value is fuzzy or unshown, the battery should be replaced promptly .

Pay attention to the polarity of battery.

Battery Safety Warning:

Do not disassemble, short-circuit, or expose to fire.

Do not use batteries not specified in this manual.

Disposal Information:

This product contains batteries, which must be recycled separately. Do not dispose of with household waste. Please contact your local recycling center or electronic retailer for proper disposal.

Warning-To reduce the risk of injury, user must read instructions manual carefully.

Please properly keep product. Check whether the product is abnormal before use. If it is abnormal, please stop using it

ATTENTION

1. Recalibration is required in the following conditions:
 - Lengthy periods of inactivity - Very frequently use
 - The testing accuracy requirement is very high.
2. The "cal"(calibration) button was pushed and electrode exposed to air for extended period of time.
3. If you calibrated the meter in the air or in wrong calibration solution, there will flash"ERR"on the screen.
4. When the tester is on, the value is jumping in the air, which is a normal phenomenon.
5. The product is modular design, if the probe is damaged, you can buy the probe for replacement
6. Please recalibrate the device after replacing probe
7. Always replace protective cap after using digital meter to keep electrode from drying out due to prolonged exposure to air, which leads to slow or unstable readings.
8. If electrode has been dried out, immerse it into distilled water for a few hours.
9. People should press the TEMP and HOLD Buttons for 3 seconds at the same time to reset it,when the date is abnormal.

WARRANTY

1. The instrument is warranted to the purchaser for a year from the date of purchase if during these periods,repair or replacement of the instrument is required,Please return the instrument to either your dealer or to our office,the repair will be effected free of charge (Damage is not due to negligence or erroneous operation by the user).
2. Please provide purchase invoice or proof before returning your instrument back.

Product Application

This instrument, which uses a pH indicator electrode to measure the pH of solutions, food, soil, etc. via potentiometry, has its pH measurement accuracy as a key indicator for evaluating its performance.

Product Usage Environments and Target Users

Laboratory Use

1. pH Pen

Application Scenarios: Professional water quality testing, hydroponics,

swimming pools, etc.

Features: Special-purpose replaceable electrode; three-point calibration; accuracy: 0.1 pH.

2. Food pH Pen

Application Scenarios: Professional food testing.

Features: Special-purpose replaceable electrode; three-point calibration; accuracy: 0.1 pH.

3. pH Tester

Application Scenarios: Laboratory research.

Features: Highest-grade electrode requirement; replaceable electrode; three-point calibration; accuracy: 0.1 pH; data storage function; multi-electrode port compatibility.

Soil Testing

Soil pH Meter

Application Scenarios: Farms, manors, planting, etc. (for measuring soil pH value) .

Features: Special-purpose electrode for soil testing; no calibration required; low accuracy requirement.

Household Use

pH Pen

Application Scenarios: Household water testing.

Features: Low-grade non-replaceable electrode; no calibration function; low measurement accuracy.

PACKING LIST

| Name | Specification | Qty(pcs) | Notes |
|----------------------------------|-------------------------|----------|---|
| Main unit | / | 1 | Comes with a pre-installed pH electrode |
| Instruction Manual | / | 1 | |
| Calibration Buffer Powder Packet | 4.00 | 1 | sachet each |
| | 6.86 | 1 | sachet each |
| | 9.18 | 1 | sachet each |
| Button Battery | DC1.5V (LR44) 160mAh | 4 | Pre-installed on the main unit |
| inner pack | / | 1 | |

CORRECT DISPOSAL

This product is subject to the provision of European Directive 2012/19/EU. The symbol showing a wheellie bin crossed through indicates that the product requires separate refuse collection in the European Union. This applies to the product and all accessories marked with this symbol. Products marked as such may not be discarded with normal domestic waste, but must be taken to a collection point for recycling electrical and electronic devices.

FCC Information:

CAUTION: Changes or modifications not expressly approved by the party responsible for compliance could void the user's authority to operate the equipment!

This device complies with Part 15 of the FCC Rules. Operation is subject to the following two conditions:

- 1) This product may cause harmful interference.
- 2) This product must accept any interference received, including interference that may cause undesired operation.

WARNING: Changes or modifications to this product not expressly approved by the party responsible for compliance could void the user's authority to operate the product.

Note: This product has been tested and found to comply with the limits for a Class B digital device pursuant to Part 15 of the FCC Rules. These limits are designed to provide reasonable protection against harmful interference in a residential installation.

This product generates, uses and can radiate radio frequency energy, and if not installed and used in accordance with the instructions, may cause harmful interference to radio communications. However, there is no guarantee that interference will not occur in a particular installation. If this product does cause harmful interference to radio or television reception, which can be determined by turning the product off and on, the user is encouraged to try to correct the interference by one or more of the following measures.

- Reorient or relocate the receiving antenna.
- Increase the distance between the product and receiver.

- Connect the product to an outlet on a circuit different from that to which the receiver is connected.
- Consult the dealer or an experienced radio/TV technician for assistance.

